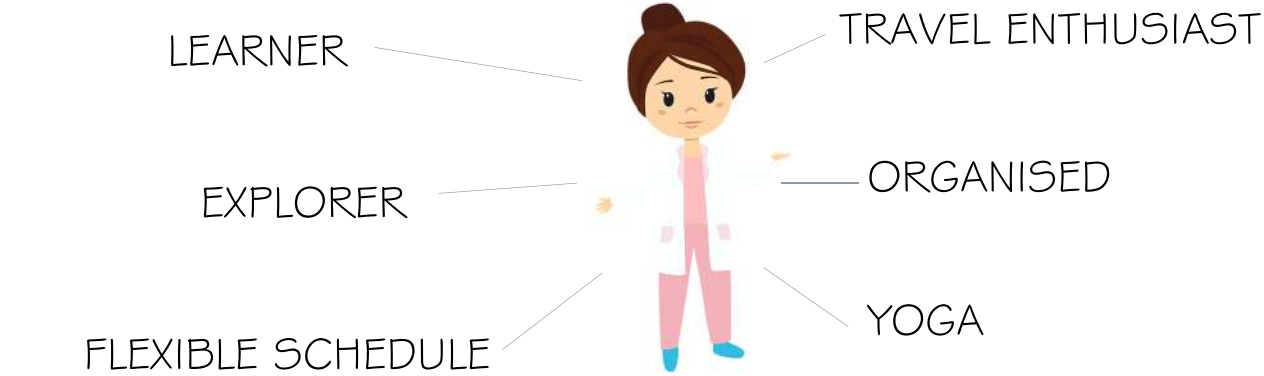


RESIDENTIAL STUDIO (Semester - 03)

The aim was to design a 2BHK flat for a bachelor that can cater to her individual requirements. My design was done for Dr. Jinali Shah who is a practising dentist. Upon mapping out her likes, dislikes, qualities etc, I narrowed down to various characteristics of her.



MOOD BOARD

The one that stood out for me was her desire to travel global and thus that became the central theme of my design. The space planning has been done in such a fashion that it can cater to all her needs as well her flexible schedule. The theme TRAVEL is reflected by the use of colour palette, wall coverings, upholstery etc.



SECTION AA'



PLAN

DETAIL - STUDY SPACE

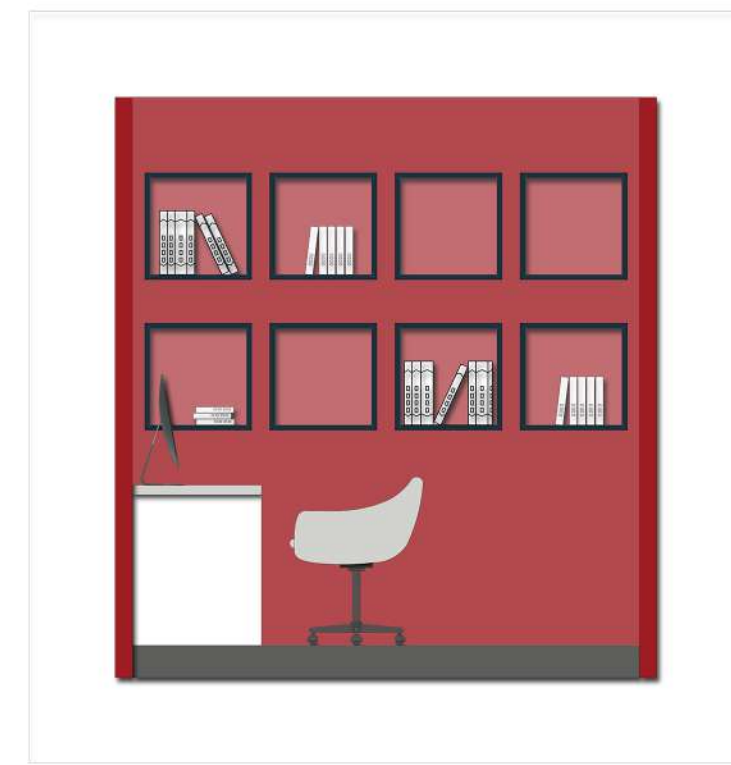
A special multi-functional studying space is designed for her to study, work, watching movies etc.

The inspiration for the design comes from the famous 'London Telephone Booth'. The stark red colour sets the feel of the booth.

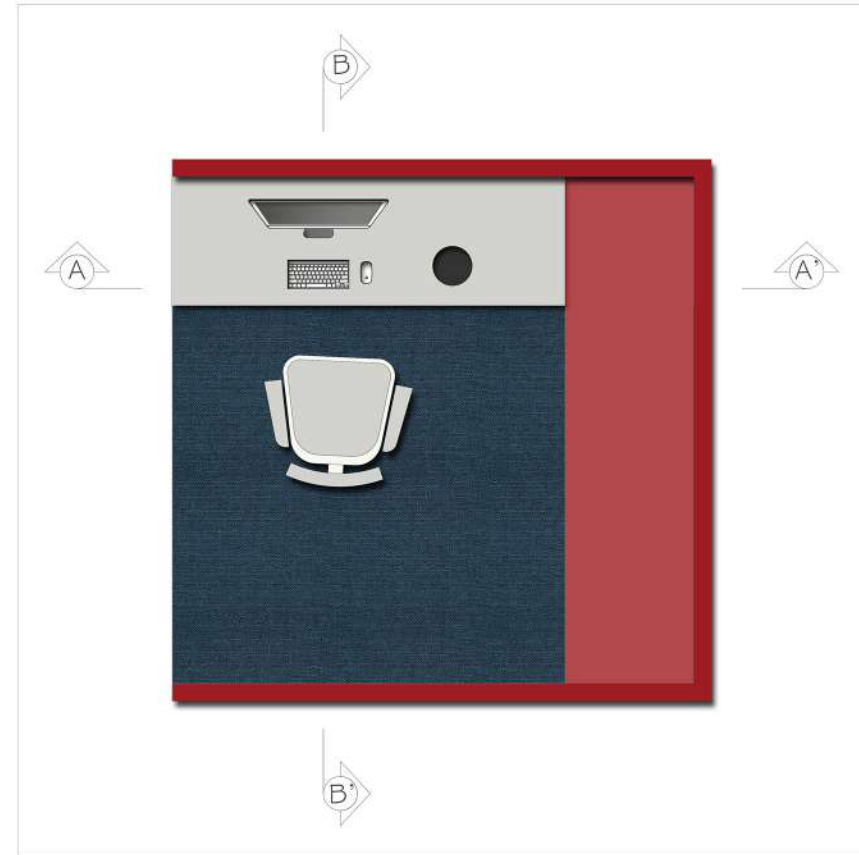
The space is equipped with a desk, in-built bookshelves and a comfy revolving chair.



SECTION AA'



SECTION BB'



PLAN

The outer frame replicates the frame of the booth and is open to the Living Space.

The bookshelves also reflects similar pattern in the form of boxes fixed inside the wall itself.

The desk is a floating desk with buffer space below for extra storage.