

# INTERNSHIP PORTFOLIO



**SEJAL GANDHI**  
**609045**

# INDEX

01	ROW HOUSING	10	PAWAN GANDHI HOUSE
02	DUPLEX FLAT	11	CONFERENCE OFFICE
03	GANGOTRI DEVELOPERS	12	AGARWAL HOUSE
04	PARSHWA REALTY APARTMENTS	13	MAHAVEER APARTMENTS
05	KATARIYA HOUSE AND SHOP	14	ABHAY GANDHI HOUSE
06	ARIHANT TRADERS	15	GOVIND PARIKH HOUSE
07	WAKHARE HOUSE	16	R.K. BHANDARI HOUSE
08	ANIL GANDHI HOUSE	17	DHIRAJ FIRODIYA HOUSE
09	EXPRESSO CAFE	18	HOTEL GRAND DARBAR



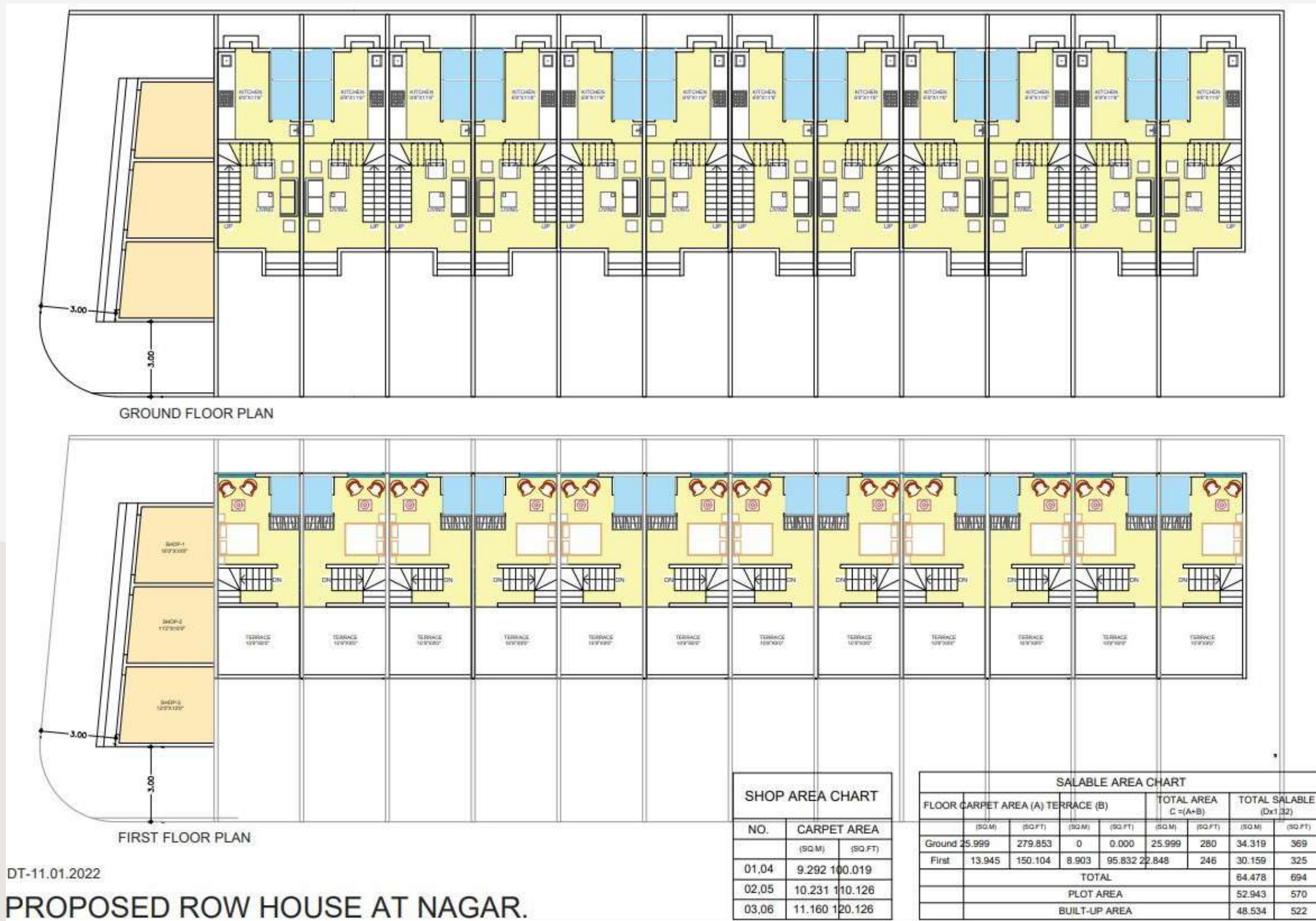
# ROW HOUSING

LOCATION: AHMEDNAGAR

BUILT-UP AREA: 48.53 SQM

PROJECT STATUS: ONGOING

TO DESIGN ROW HOUSING OF 12 UNITS OF 2 FLOORS GROUND FLOOR AND FIRST FLOOR



DT-11.01.2022

PROPOSED ROW HOUSE AT NAGAR.

# DUPLEX FLAT

LOCATION:SHIRUR,PUNE

PROJECT STATUS: ONGOING

THE HOUSE IS IN DESIGNED IN 1500 SQM KEEPING THE SPATIAL ARRANGEMENTS OF THE ENTIRE HOUSE HAS BEEN DONE WITH PROPER SEGREGATION OF PUBLIC ,SEMI PUBLIC AND PRIVATE SPACES



GROUND FLOOR PLAN



FIRST FLOOR PLAN

GROUND = 1580.00 SQ.M  
FIRST = 1580.00 SQ.M  
TOTAL = 3160.00 SQ.M



DT-21.10.2020

athila  
Architects & Interior Designer

PROPOSED BUNGALOW AT SHIRUR.



SECOND FLOOR PLAN



THIRD FLOOR PLAN

GROUND = 1580.00 SQ.M  
FIRST = 1580.00 SQ.M  
TOTAL = 3160.00 SQ.M



DT-21.10.2020

athila  
Architects & Interior Designer

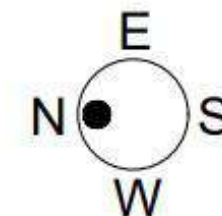


# GANGOTRI DEVELOPERS

LOCATION:SHIRUR,PUNE

PROJECT STATUS:COMPLETED

THE FLAT SYSTEM IS DESIGNED IN KEEPING THE SPATIAL ARRANGEMENTS OF THE ENTIRE FLAT WHERE HAS PUBLIC, SEMI PUBLIC AND PRIVATE SPACES ARE BEEN SEGREGATED WITH CONNECTING SPACES AND SO THAT THE PRIVATE SPACES HAS MAINTAINED ITS VALUE.



# PARSHWA REALTY APARTMENTS

LOCATION: AHMEDNAGAR

PROJECT STATUS: ONGOING

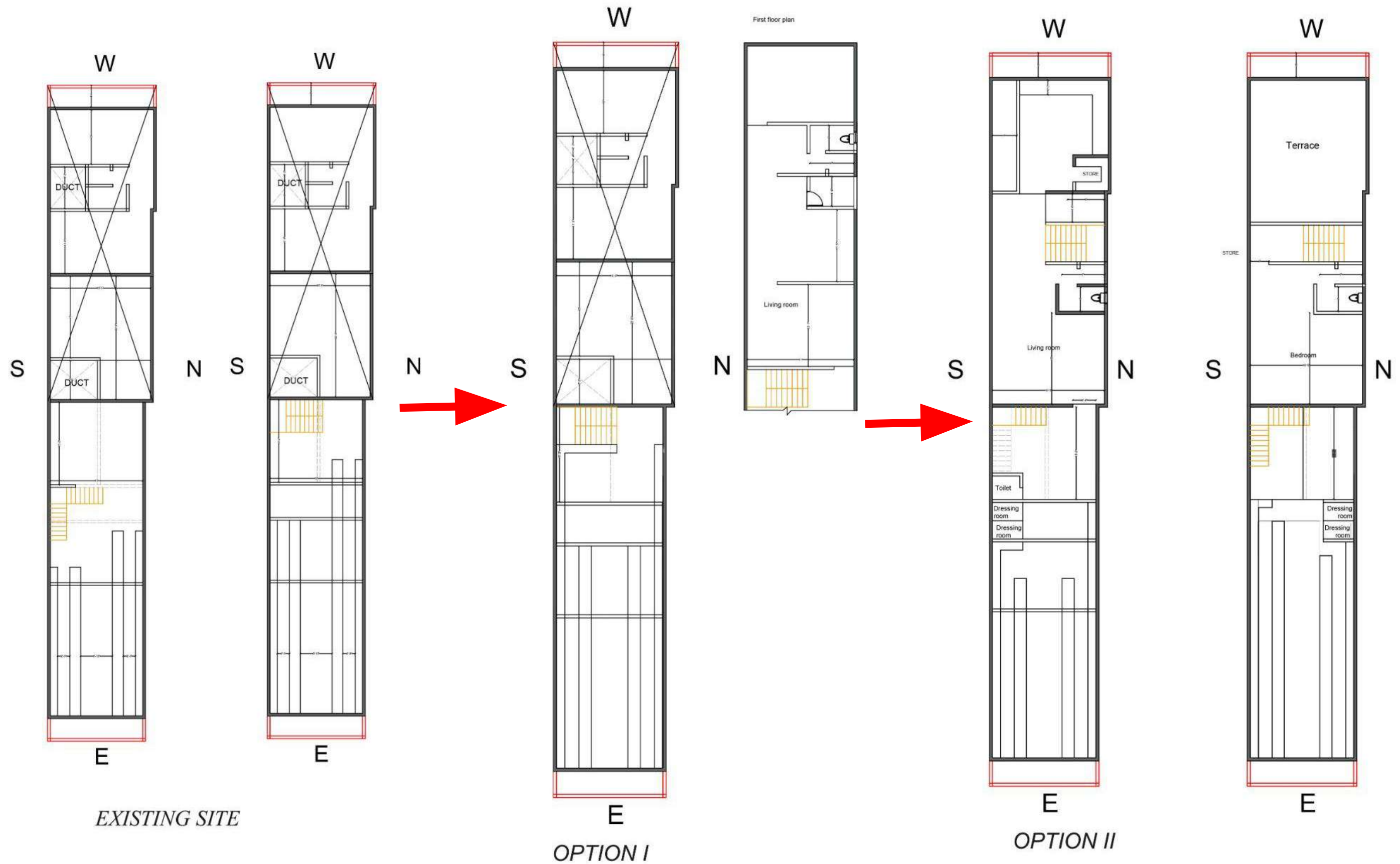


THE 3BHK FLAT IS DESIGNED SO WHERE HAS PUBLIC SPACE HAS BEEN PUT ON THE ROAD SIDE AND PRIVATE SPACES ARE PUT BEHIND AT THE END SO THAT NO DISTURBANCE WILL BE THERE FOR PRIVATE SPACES .

THE 2BHK FLAT IS DESIGNED SO WHERE HAS PUBLIC SPACE , DUCTS HAS BEEN PUT NEAR THE SHOPS AND PRIVATE SPACES ARE PUT BEHIND AT THE END.



# KATARIYA SHOP AND HOUSE





# KATARIYA SHOP AND HOUSE



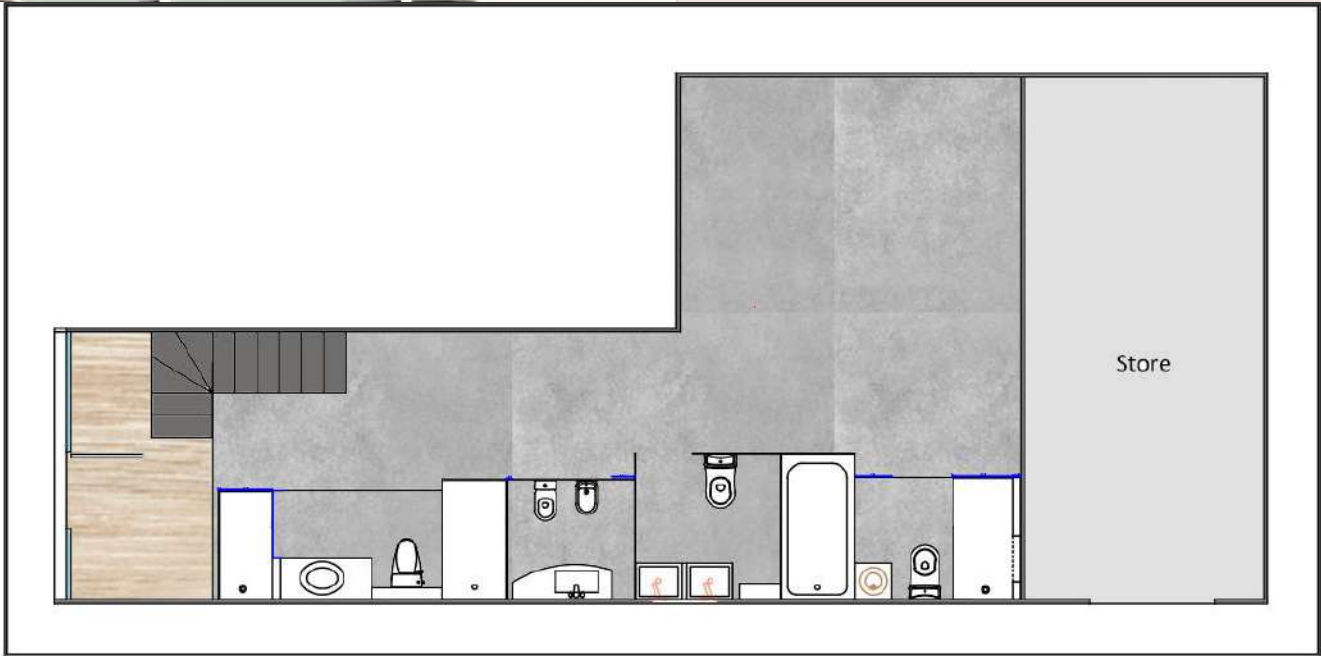
LOCATION: KADA  
PROJECT STATUS: ONGOING

IN THIS PROJECT THERE HAS BEEN COMBINATION OF SHOP AND HOUSE, WHERE THE SHOP SHOULD BE IN FRONT AND THE HOUSE SHOULD BE IN CONNECTING THE SHOP. IN THIS THE SPATIAL ARRANGEMENTS OF THE ENTIRE HOUSE HAS BEEN DONE WITH PROPER SEGREGATION OF PUBLIC LIKE LIVING ROOM POOJA AREA KITCHEN ARE ON THE GROUND FLOOR CONNECTED WITH THE DUCT, AND PRIVATE SPACES ARE ON THE SECOND FLOOR.

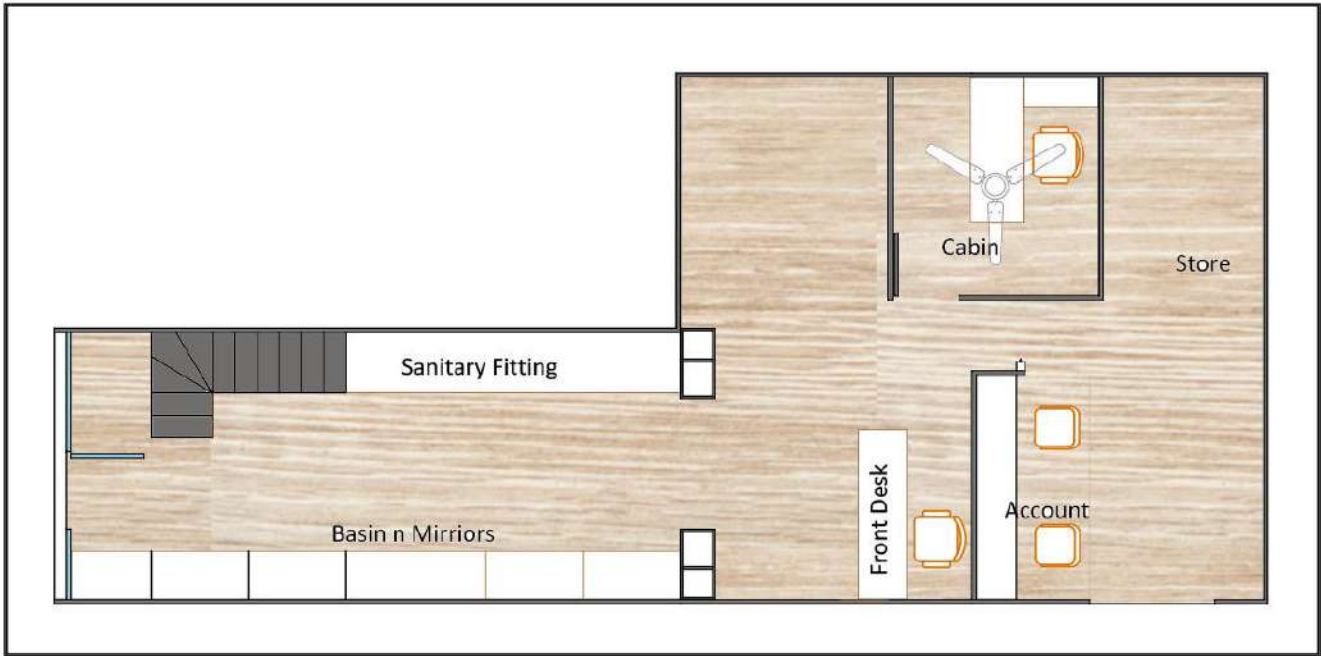


# ARIHANT TRADERS

LOCATION:AHMEDNAGAR  
PROJECT STATUS: ONGOING



FIRST FLOOR



GROUND FLOOR

## FIRST FLOOR

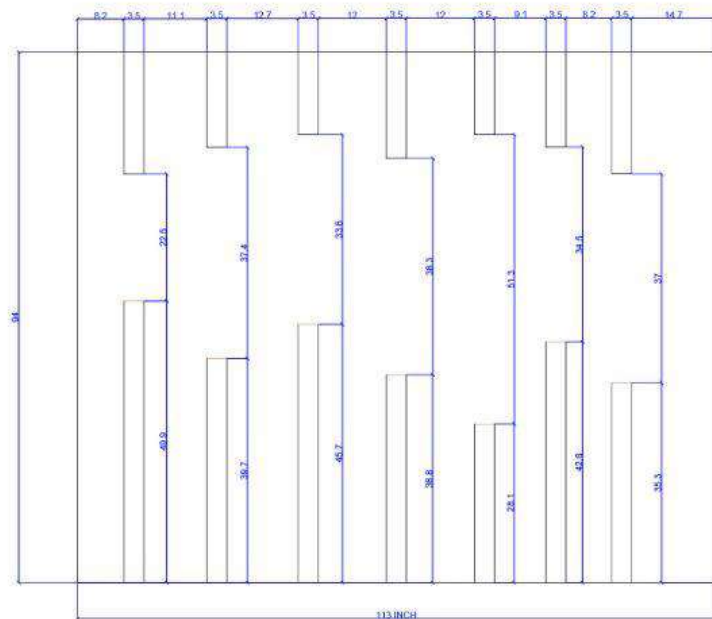
ON THIS FLOOR THE REAL BATHROOM IS BEEN ARRANGED LIKE HOW THE WASHROOM WILL BEEN SEEN LIKE WITHOUT OR WITH BATHTUBS AUR DIFFERENT SHOWERS OR DIVIDED SPACES WITH DRY OR WET AREA.

## GROUND FLOOR

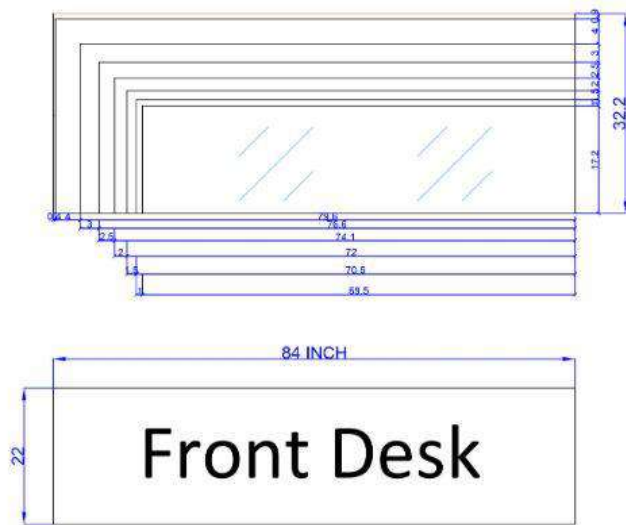
IT HAS BEEN DESIGNED IN A WHERE ALL THE INDIVIDUALS ARE BEEN PUT LIKE FAUCETS SHOWERS BASIN AND OTHER REQUIRED MATERIALS IN WASHROOM ARE ARRANGED IN PRESENTABLE MANNER



# ARIHANT TRADERS

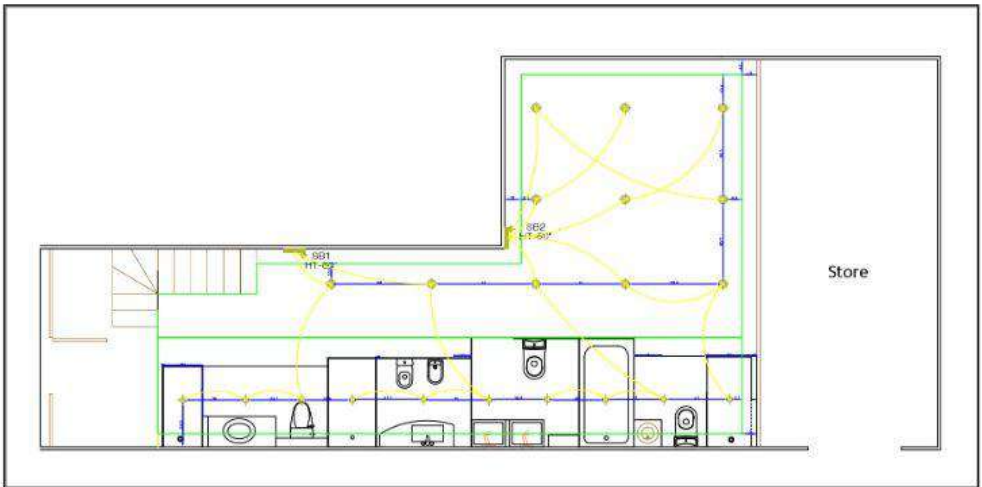
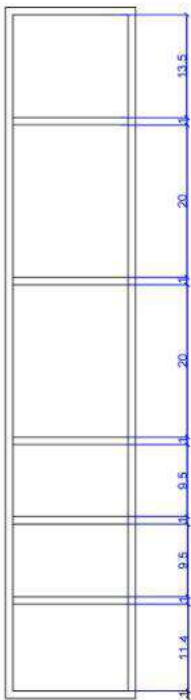
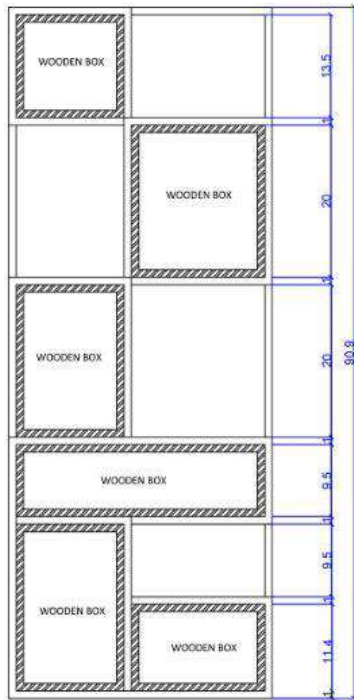
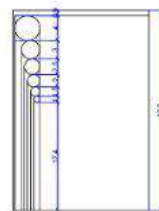


BACK PANEL

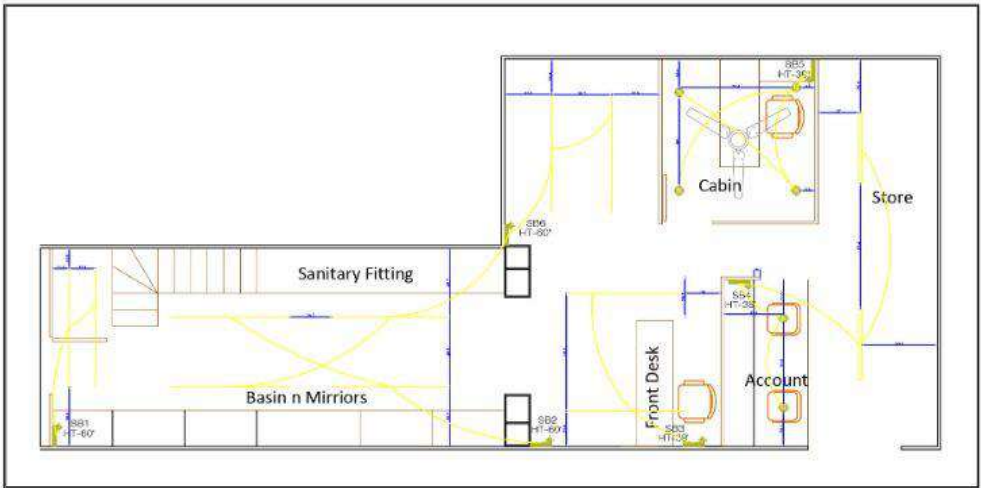


Front Desk

PLAN

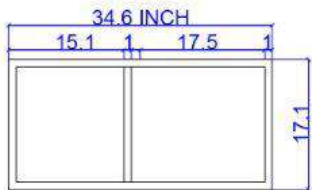


FIRST FLOOR

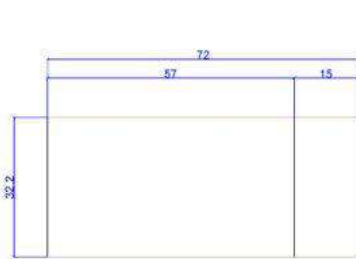


GROUND FLOOR

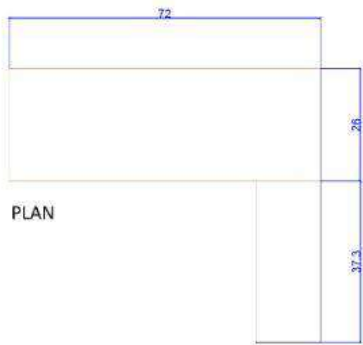
LEGEND	
	12"x 12" light (12watt)
	Spot light (3watt)
	Wall Point
	Wall Fan
	Fan Point
	Switch Board
	Track lights
	Two Way Light
	Tube lights



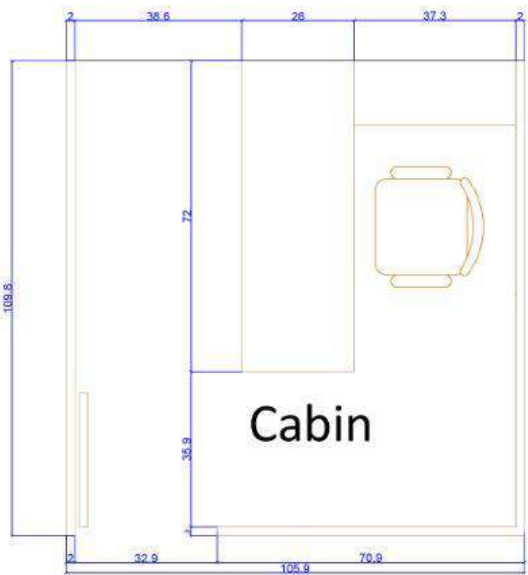
PLAN



ELEVATION



PLAN



Cabin



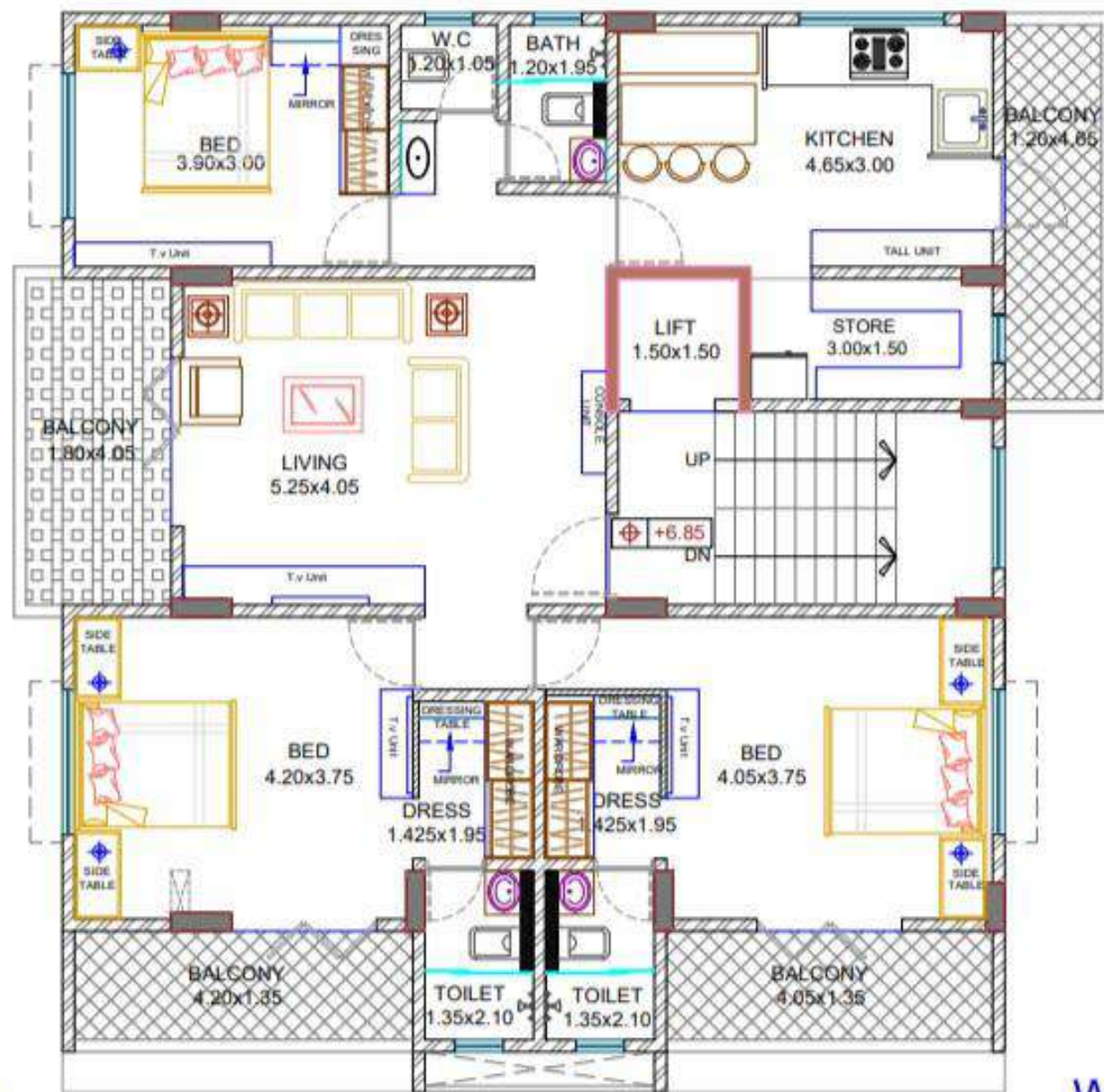
# WAKHARE HOUSE

LOCATION:PUNE

PROJECT STATUS: COMPLETED

E

N



W

SECOND FLOOR PLAN

THE APARTMENTS WAS ON THE SECOND FLOOR OF BUILDING THERE WE NEED TO DESIGN THE INTERIOR OF THE FLAT KEEPING IN THE WITH SPATIAL SPACES OF PUBLIC ,SEMI PUBLIC AND PRIVATE SPACES

# ANIL GANDHI HOUSE

LOCATION:AHMEDNAGAR

PROJECT STATUS: COMPLETED



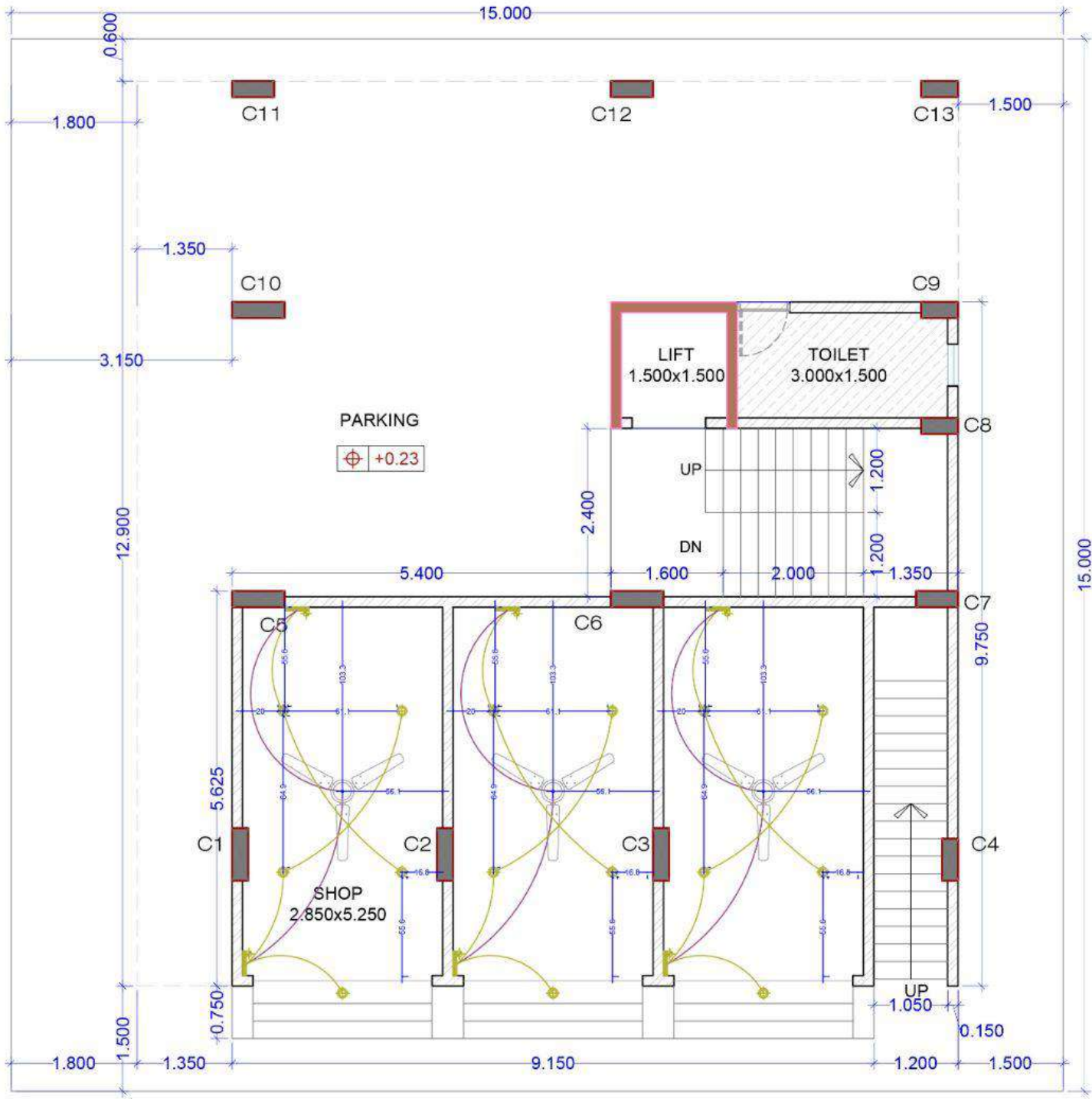
Ground floor

First floor









THE HOUSE HAS BEEN ALREADY CONSTRUCTED THERE WE NEED TO DESIGN ON THE UPPER FLOOR BEDROOMS AND CONNECTING SPACE BETWEEN GROUND FLOOR AND FIRST FLOOR OF HOUSE

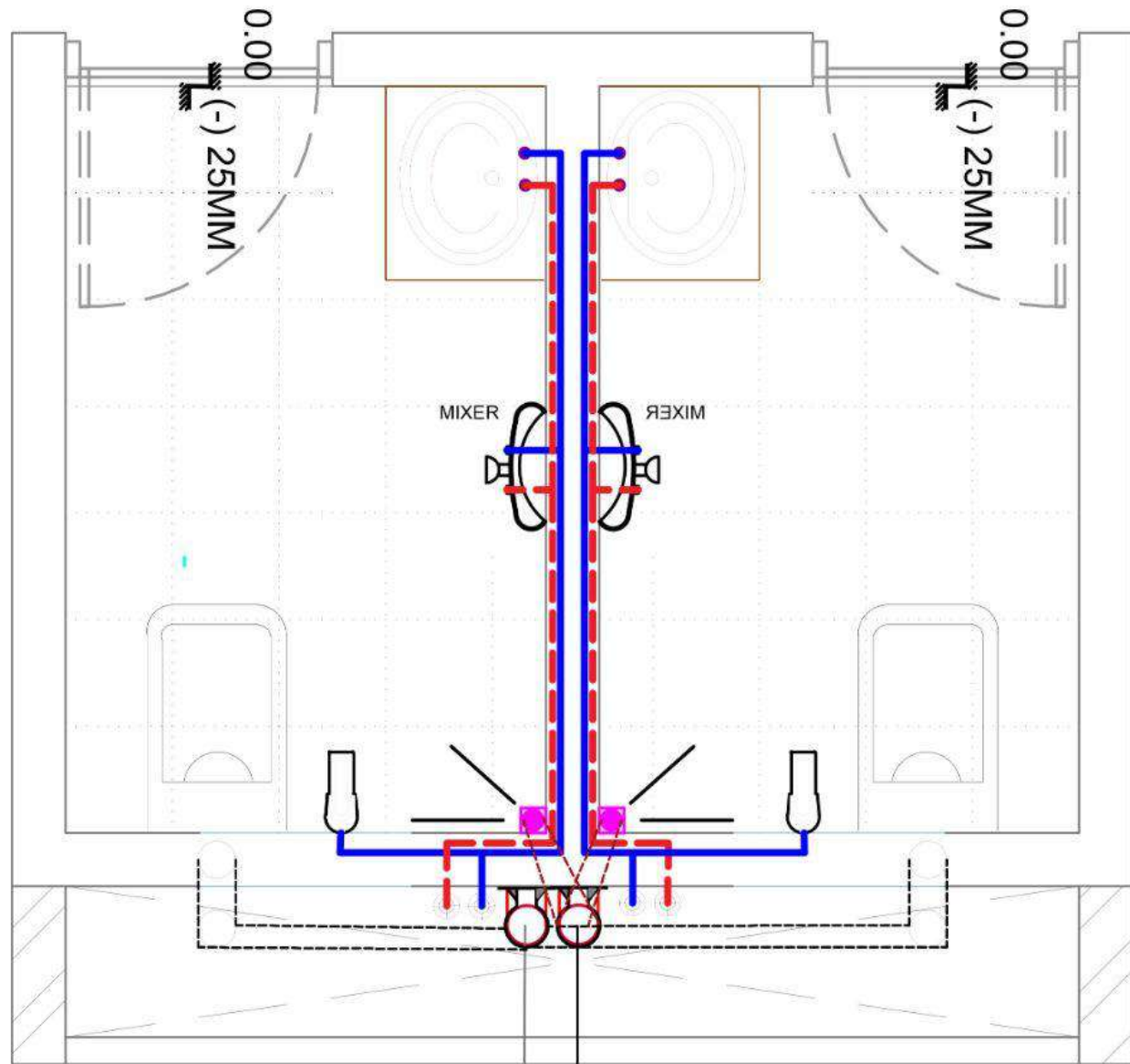


# WAKHARE HOUSE



## GROUND FLOOR PLAN

	12"x 12" light (12watt)		Fan Point
	Spot light (3watt)		Switch Board
	Wall Point		Single Way
	Wall Fan		Two Way Light

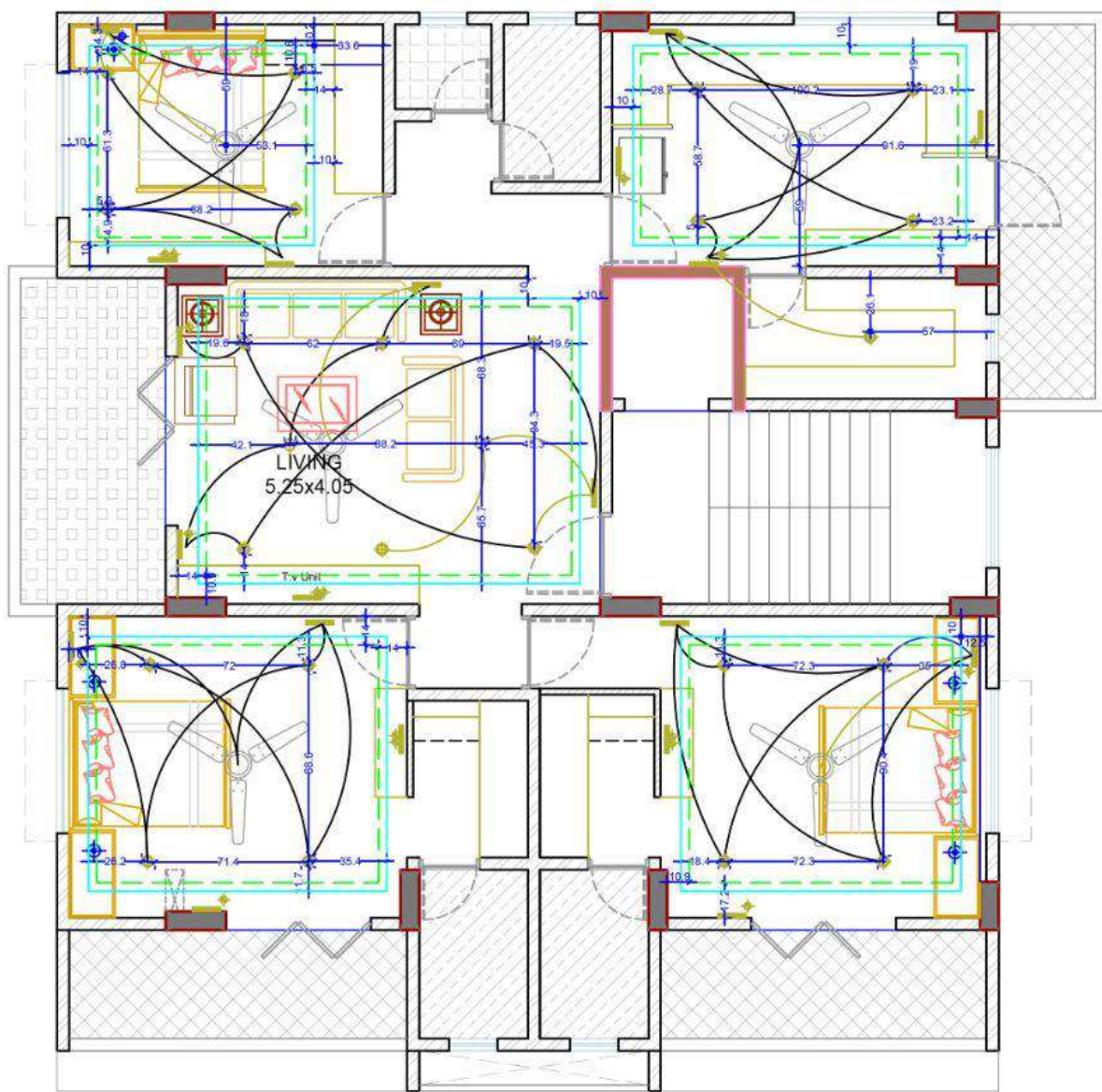


## TOILET DETAILS

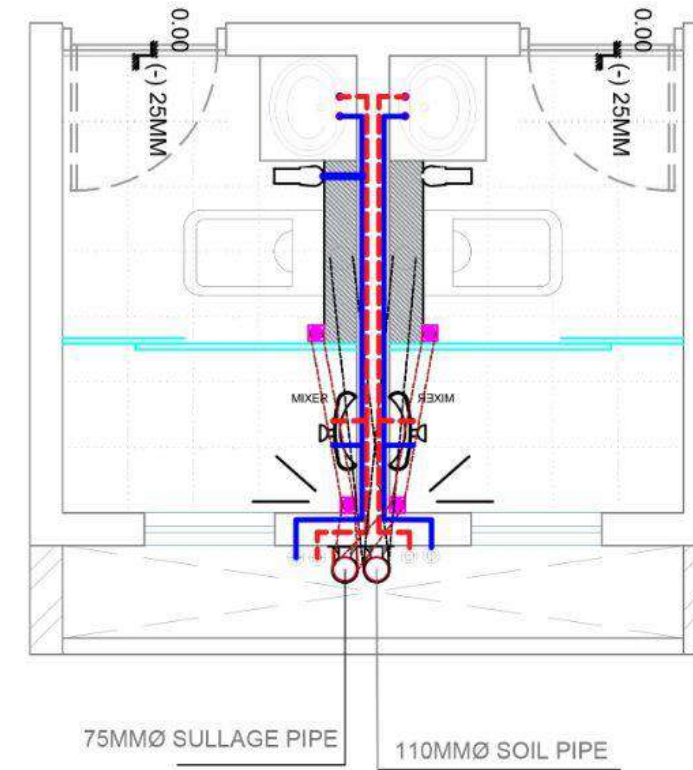
110MMØ SOIL PIPE

75MMØ SULLAGE PIPE

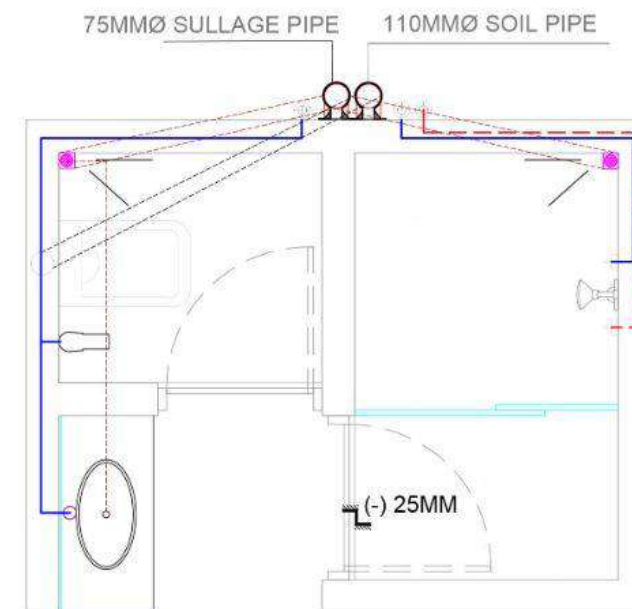
# WAKHARE HOUSE



## ELECTRICAL LAYOUT











## TOILET DETAILS



## TOILET DETAILS

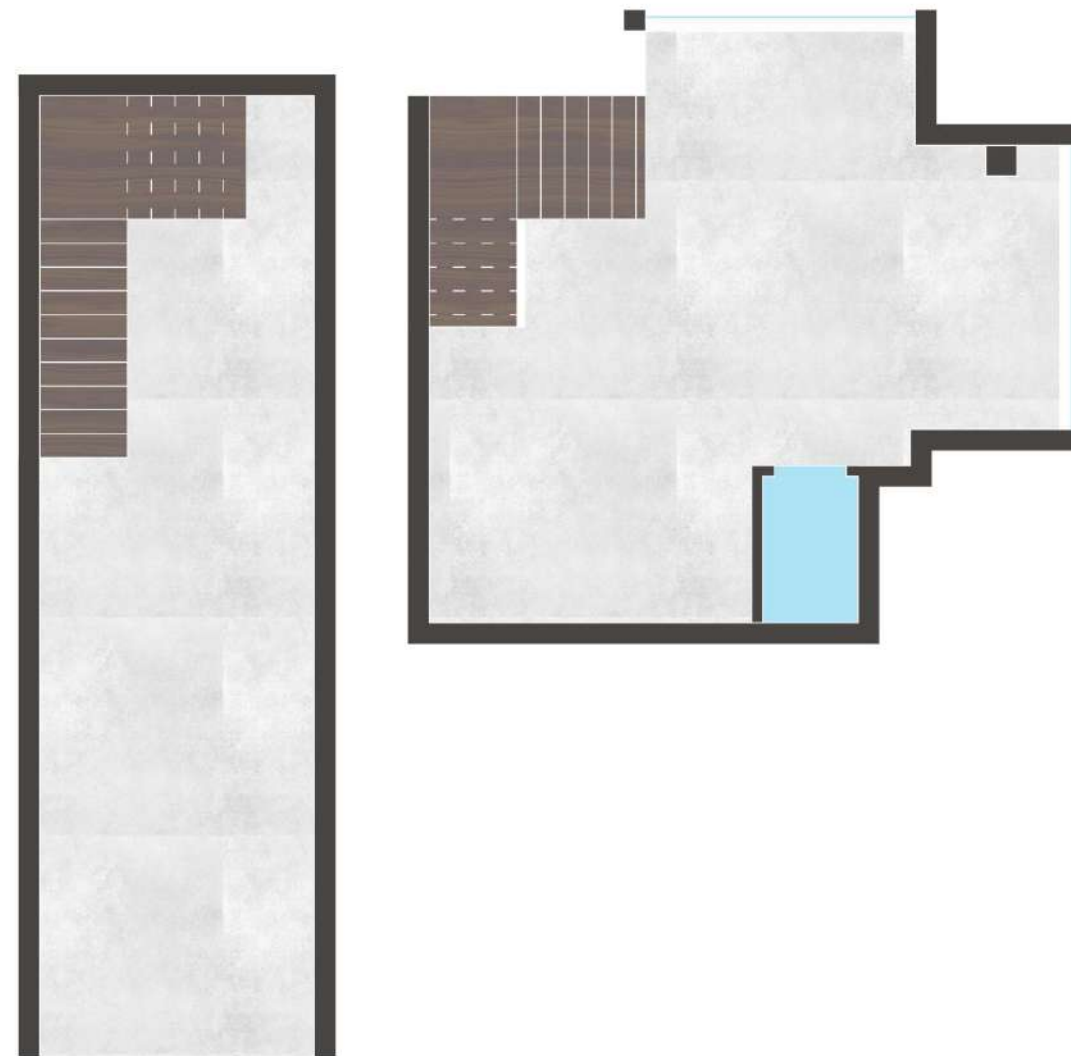
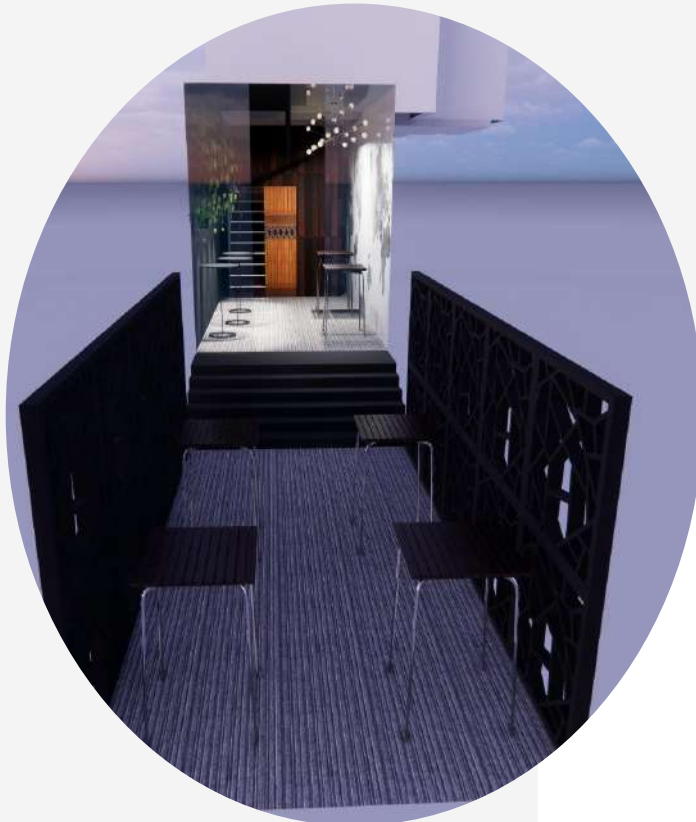
### LEGEND

	12"x 12" light (12watt)
	Spot light (3watt)
	Wall Point
	Wall Fan
	Fan Point
	Switch Board
	Single Way
	Two Way Light



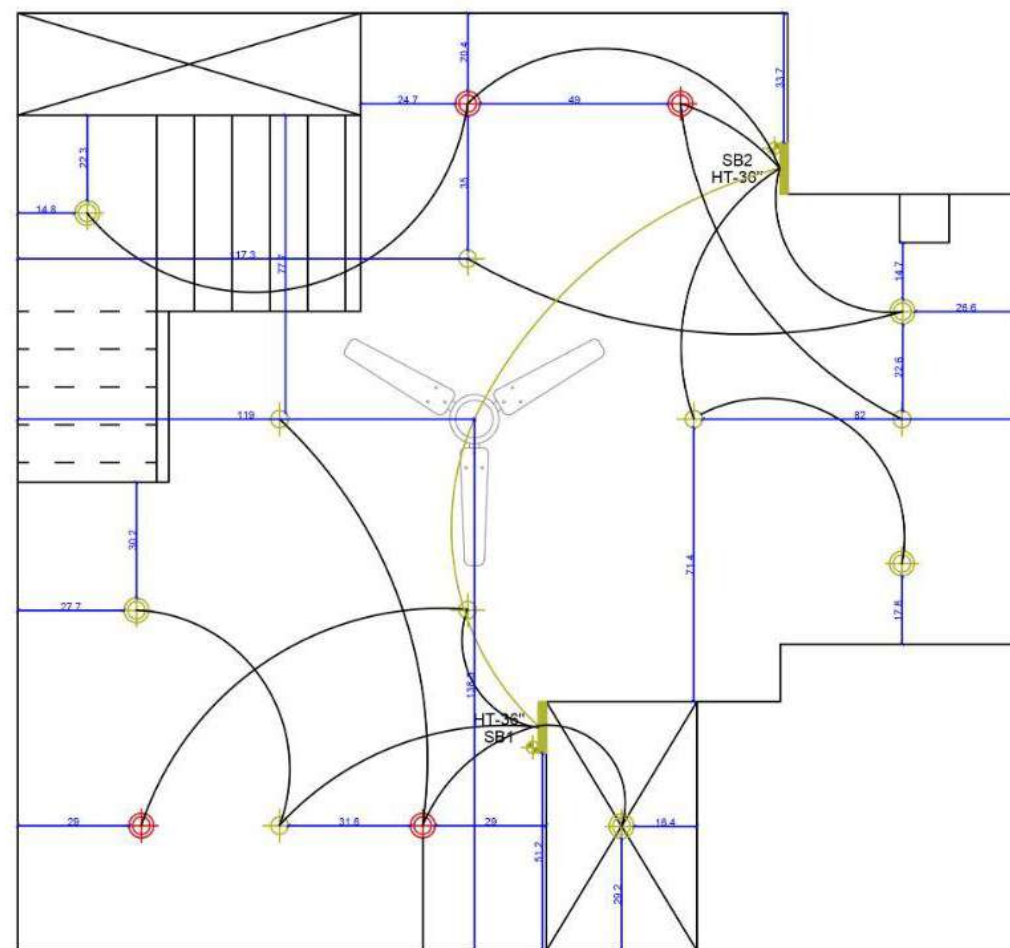
# EXPRESSO CAFE

THE CAFE IS BEEN DESIGNED KEEPING IN MIND THE LIGHT OR HAPPINESS AND DARK OR SADNESS THEME WHERE IN THE LIGHT THEME EVERYTHING IS IN BRIGHT LIGHTS AND COLOURS AND IN DARK BLACK IS BEEN IMPLEMENTED ACCORDING TO THE HUMANS EMOTIONS





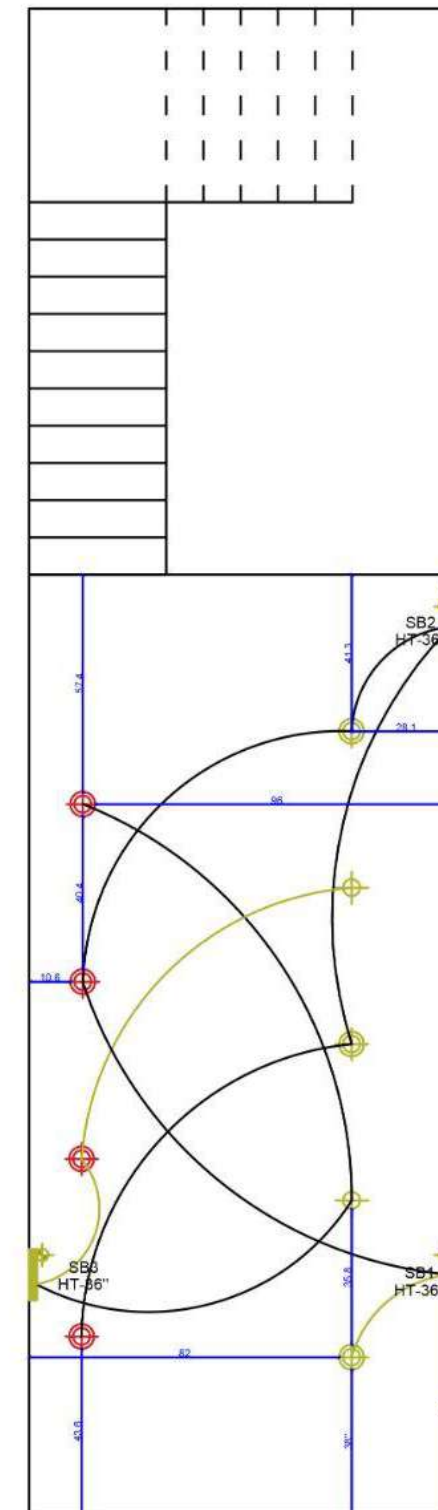
# EXPRESSO CAFE



### First floor



### LEGEND

	GS8008/6C light (E 27)
	ROPE LIGHT
	Wall Point
	GS18301/1P light (1XE27)
	Switch Board
	Single Way
	Two Way Light
	Fan Point



Ground floor

### LEGEND

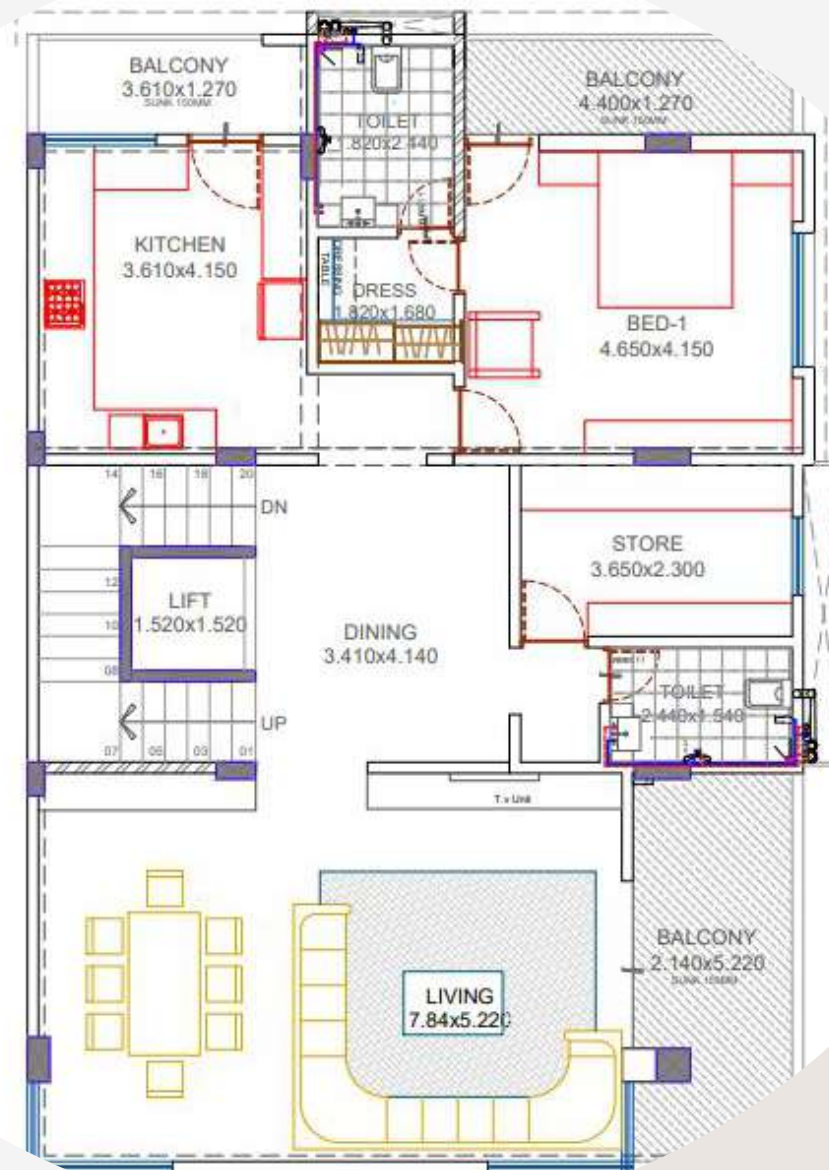
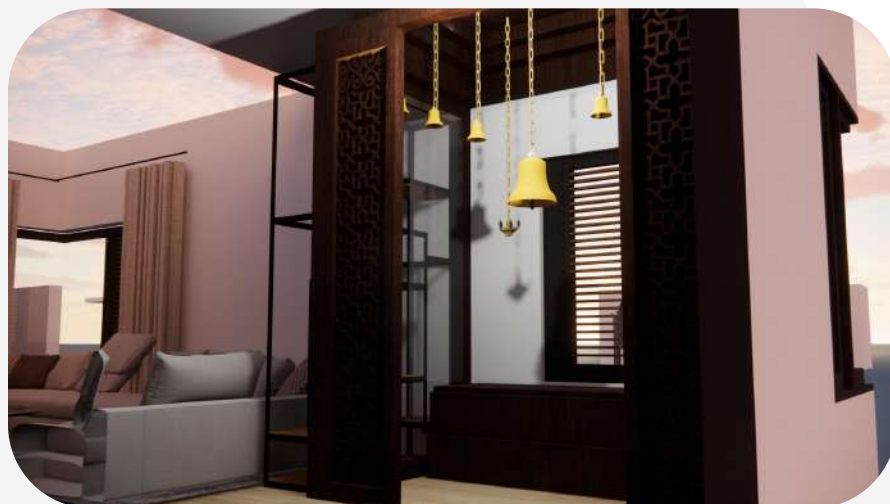
	GS8008/6C light (E 27)
	ROPE LIGHT
	Wall Point
	GS18301/1P light (1XE27)
	Switch Board
	Single Way
	Two Way Light

# PAVAN GANDHI HOUSE

LOCATION: SHIRUR,PUNE

PROJECT STATUS: ONGOING

THE HOUSE HAS BEEN ALREADY CONSTRUCTED THERE WE NEED TO DESIGN THE INTERIOR OF THE HOUSE ON THE FIRST FLOOR A CONNECTION HAS BEEN CREATED BETWEEN THE LIVING ROOM DINING AREA AND MANDIR AND BEDROOM HAS BEEN DESIGNED IN 2 WAYS ONE WITH BLACK AND WHITE THEME AND OTHER WITH COLOURFUL COLOURS



FIRST FLOOR



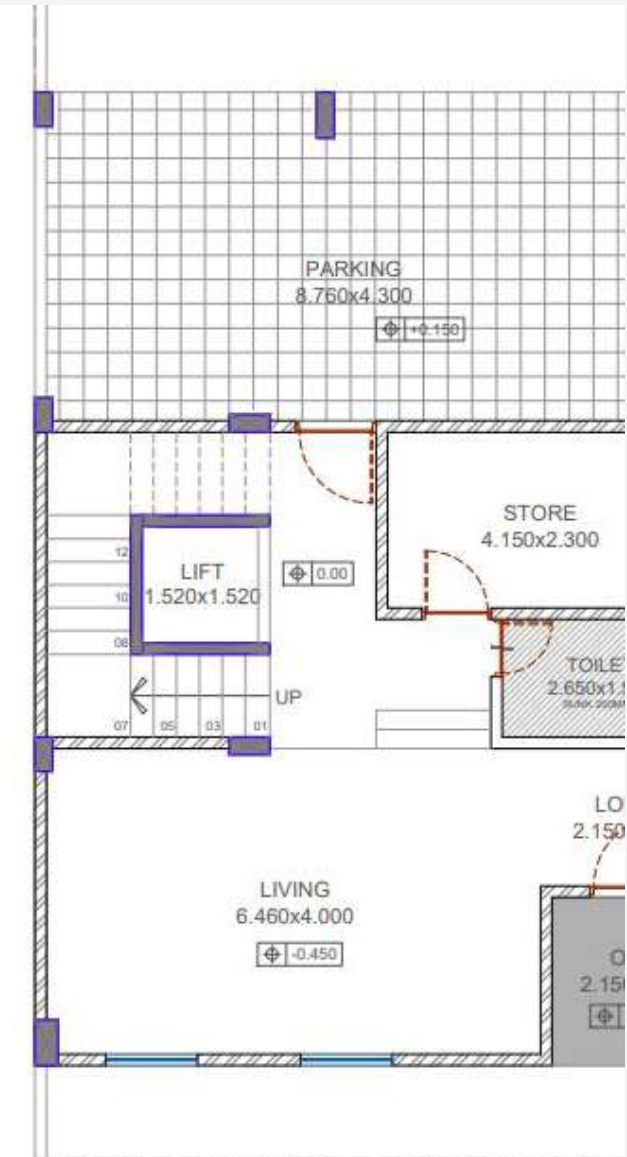


# PAVAN GANDHI HOUSE

LOCATION: SHIRUR,PUNE

PROJECT STATUS: ONGOING

IN THE GROUND FLOOR THE LIVING ROOM IS BEEN DESIGNED IN MOORISH STYLE WHERE ARABIC STYLE WINDOWS HAS BEEN DONE ORNAMENTAL DETAIL AND CHAINTORS AND SITTING PLACE IS BEEN ORGANISED TO ACQUIRE THAT LOOK.



GROUND FLOOR



THIRD FLOOR

ON THE THIRD FLOOR THE HOME THEATRE IS BEEN DESIGNED IN 2 TYPES ONE WHERE INDIAN SITTING IS BEEN THEIR AND THE SECOND IS DESIGNED IN RESPECTIVE OF THE LIVING ROOM ON THE FIRST FLOOR.



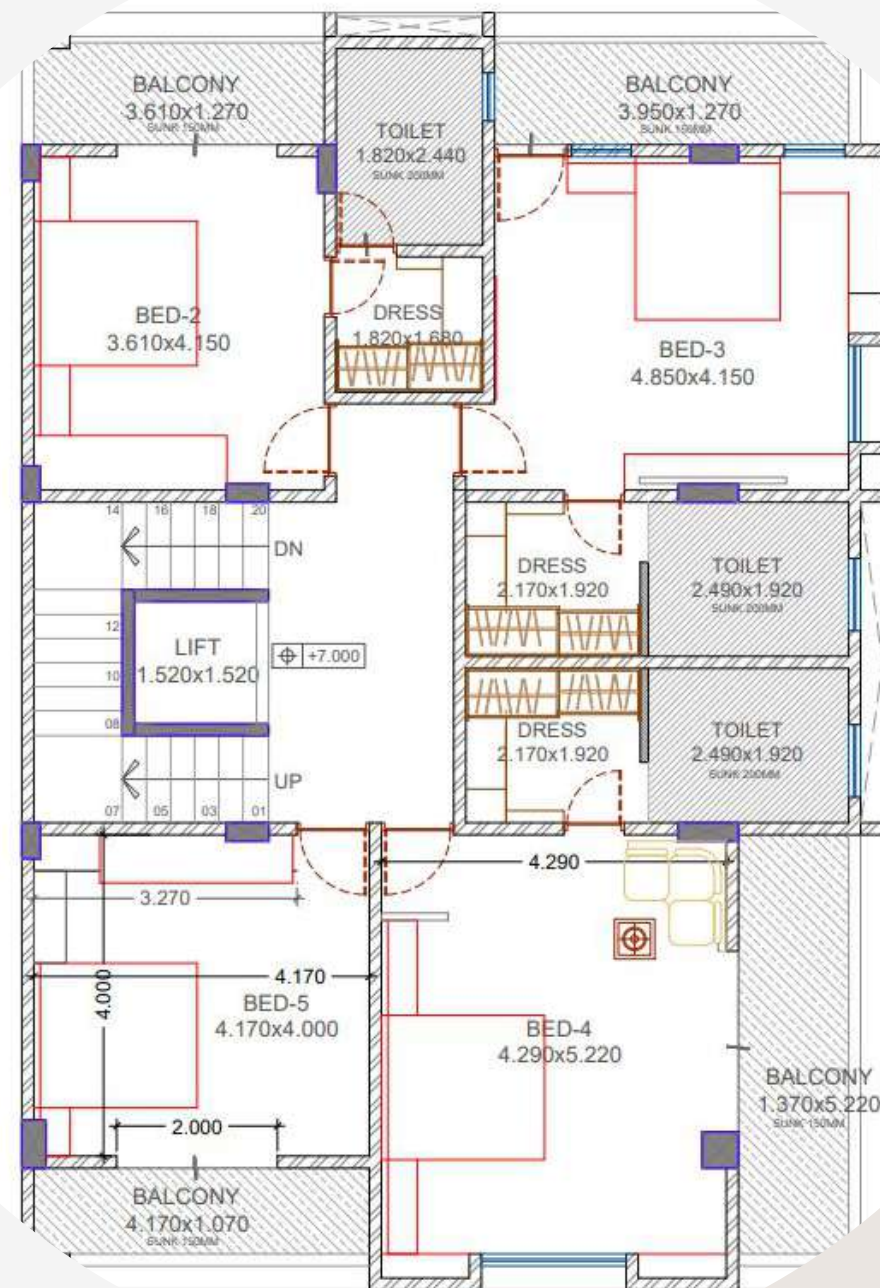
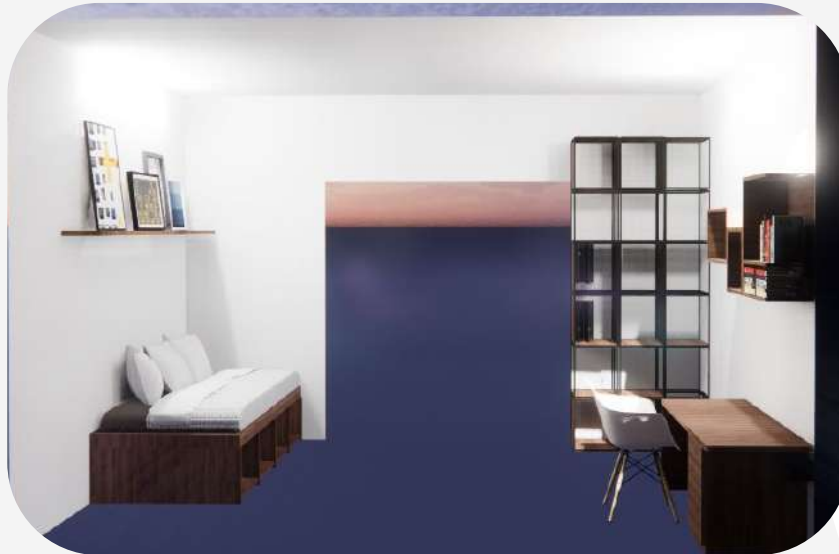


# PAVAN GANDHI HOUSE

LOCATION: SHIRUR,PUNE

PROJECT STATUS: ONGOING

ON THE SECOND FLOOR  
BEDROOMS AND STUDY AREA IS  
BEEN DESIGNED ACCORDING TO  
THEIR SPACES AND LIGHT  
,VENTILATIONS



SECOND FLOOR



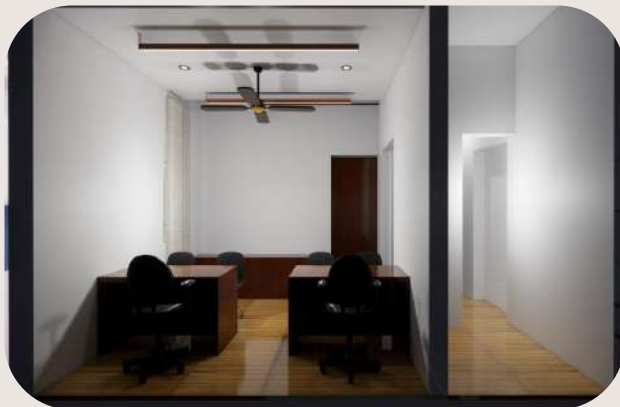


# CONFERENCE OFFICE

LOCATION: PUNE

PROJECT STATUS: ONGOING

OPTION I



THE SPACES IS BEEN DIVIDED IN TO AREA ONE  
CONFERENCE ROOM AND THE OTHER  
ADMINISTRATIVE DEPARTMENT THE BOTH IS  
BEEN CONNECTED WITH PANTRY AND  
CONNECTING SPACE WHERE A WOODEN LOOK IS  
BEEN IMPLEMENTED BOTH ON WALLS AND  
CEILING TO GIVE SENSE OF CONTINUTIY

OPTION II



# AGARWAL HOUSE

LOCATION:PUNE

PROJECT STATUS: ONGOING



PANEL DESIGN OF THE MAIN DOOR OF FLAT IS DONE WHERE GOLD PLATING IS DONE ON BORDERS WITH DULL YELLOWISH BROWN COLOUR IN CONTRAST WITH FOCUSING 3 SPOTLIGHTS ON THE SURFACE.

# MAHAVEER APARTMENTS

LOCATION:AHMEDNAGAR

PROJECT STATUS: ONGOING



THE APARTMENTS WAS ON THE SECOND FLOOR OF BUILDING THERE WE NEED TO DESIGN THE INTERIOR OF THE FLAT KEEPING IN THE WITH SPATIAL SPACES OF PUBLIC ,SEMI PUBLIC AND PRIVATE SPACES



# ABHAY GANDHI HOUSE

LOCATION: PUNE

PROJECT STATUS: ONGOING

THE FORM IS BEEN DESIGNED WHERE LONG WINDOWS HAVE BEEN GIVEN FOR LIGHT AND VENTILATION ,L SHAPED PERGOLAS HAVE BEEN DESIGN , A GLASS SQUARE HAS BEEN GIVEN FOR MEDITATION AREA AND IN THE FRONT JALI SHEET IS BEEN PROVIDED FOR AETHETIC PURPOSE .

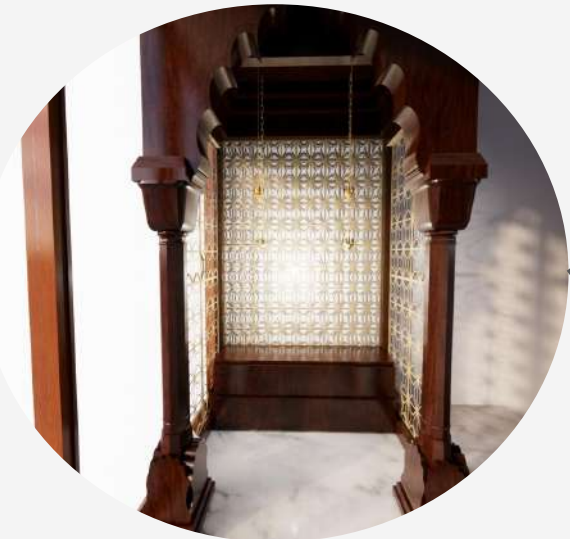
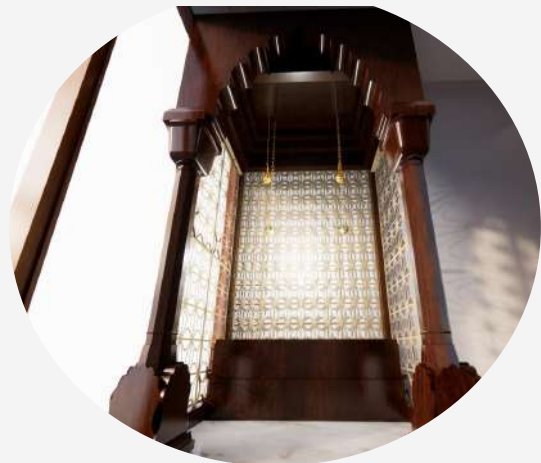




# GOVIND PARIKH HOUSE

LOCATION: PUNE

PROJECT STATUS: COMPLETED



THE MANDIR IS DESIGNED ACCORDING THE HINDU RELIGION WHERE ARCH WITH PILLAR IS BEEN PROVIDED IN THE FRONT WITH JALI WALL AT THE BACK AND SIDE WALL AND INSIDE BELLS HANGING IN DECREASING ORDER GIVE THE EFFECT OF THE TEMPLE

# R.K BHANDARI HOUSE

LOCATION:PUNE

PROJECT STATUS: ONGOING

TO DESIGN THE 3D VIEW OF THE BEDROOM AND TOILET WHERE THE IT HAS BEEN DIFFERENTIATED WITH DRY AND WET AREA AND THE ROOM IS BEEN DESIGNED IN A LAVISH FORM.





# DHEERAJ FIRODIYA HOUSE

LOCATION:PUNE

PROJECT STATUS: ONGOING

THE SPATIAL  
ARRANGEMENTS OF THE  
ENTIRE HOUSE HAS  
BEEN DONE WITH  
PROPER SEGREGATION  
OF PUBLIC ,SEMI PUBLIC  
AND PRIVATE SPACES.  
WHERE A COURTYARD IS  
BEEN PROVIDED FOR  
LIGHT VENTILATION AND  
SPACE.



GROUND FLOOR

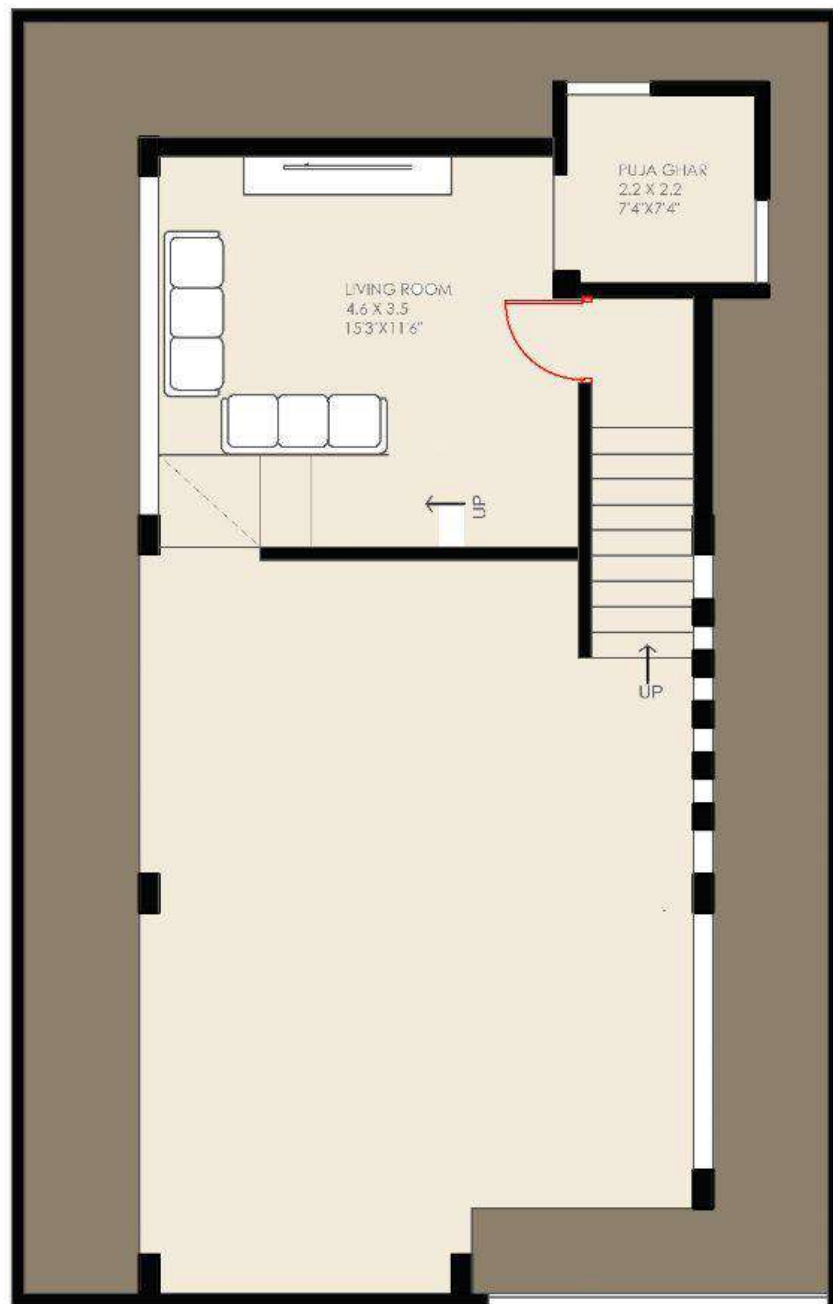


FIRST FLOOR

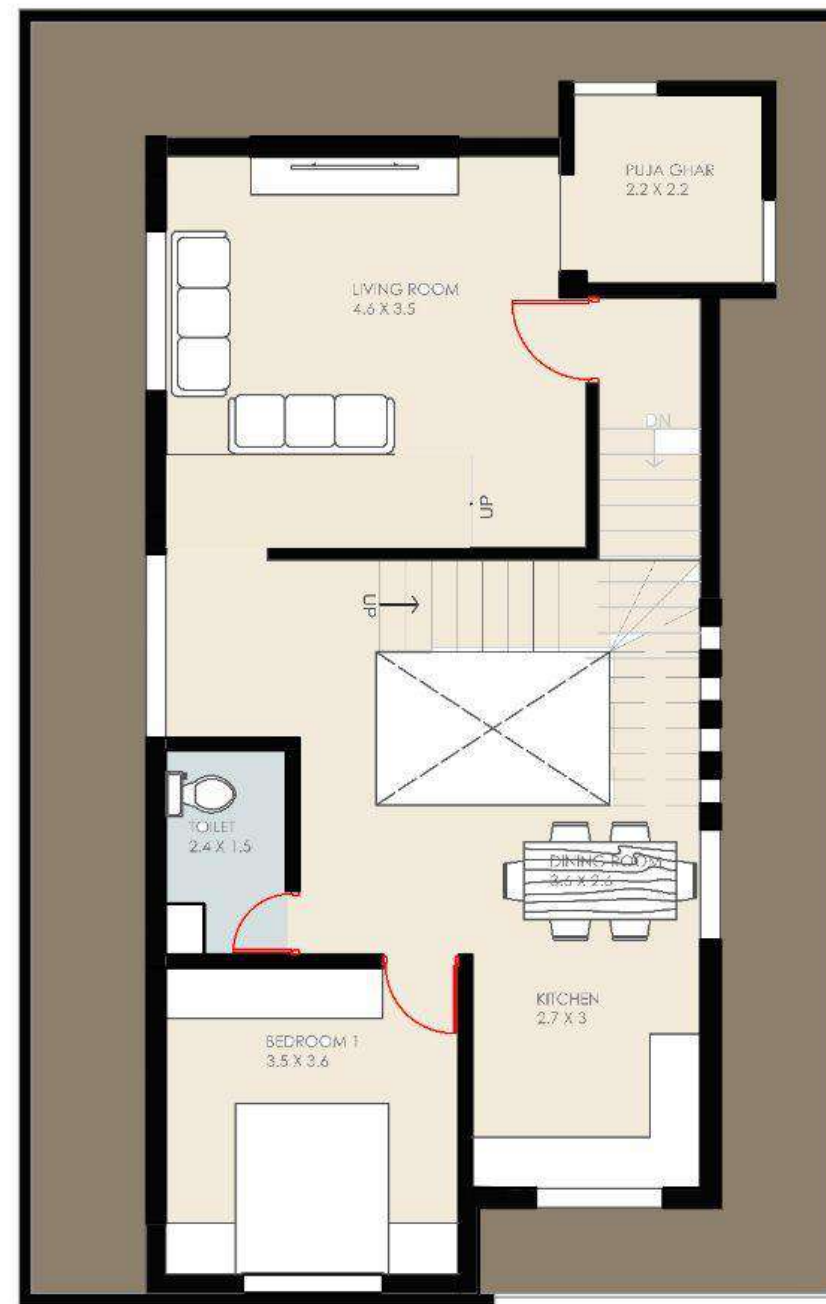
# DHEERAJ FIRODIYA HOUSE

LOCATION:PUNE

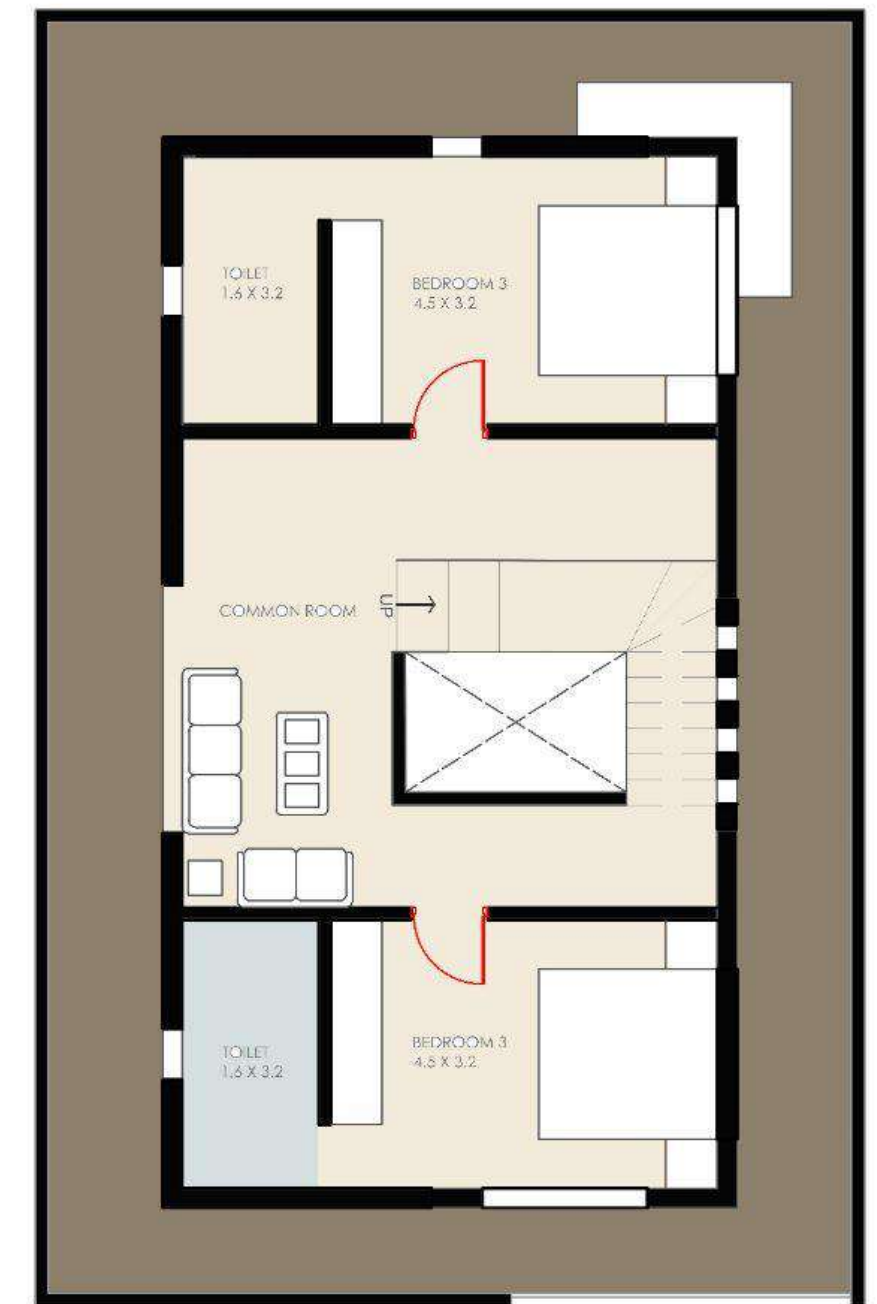
PROJECT STATUS: ONGOING



GROUND FLOOR



FIRST FLOOR



SECOND FLOOR

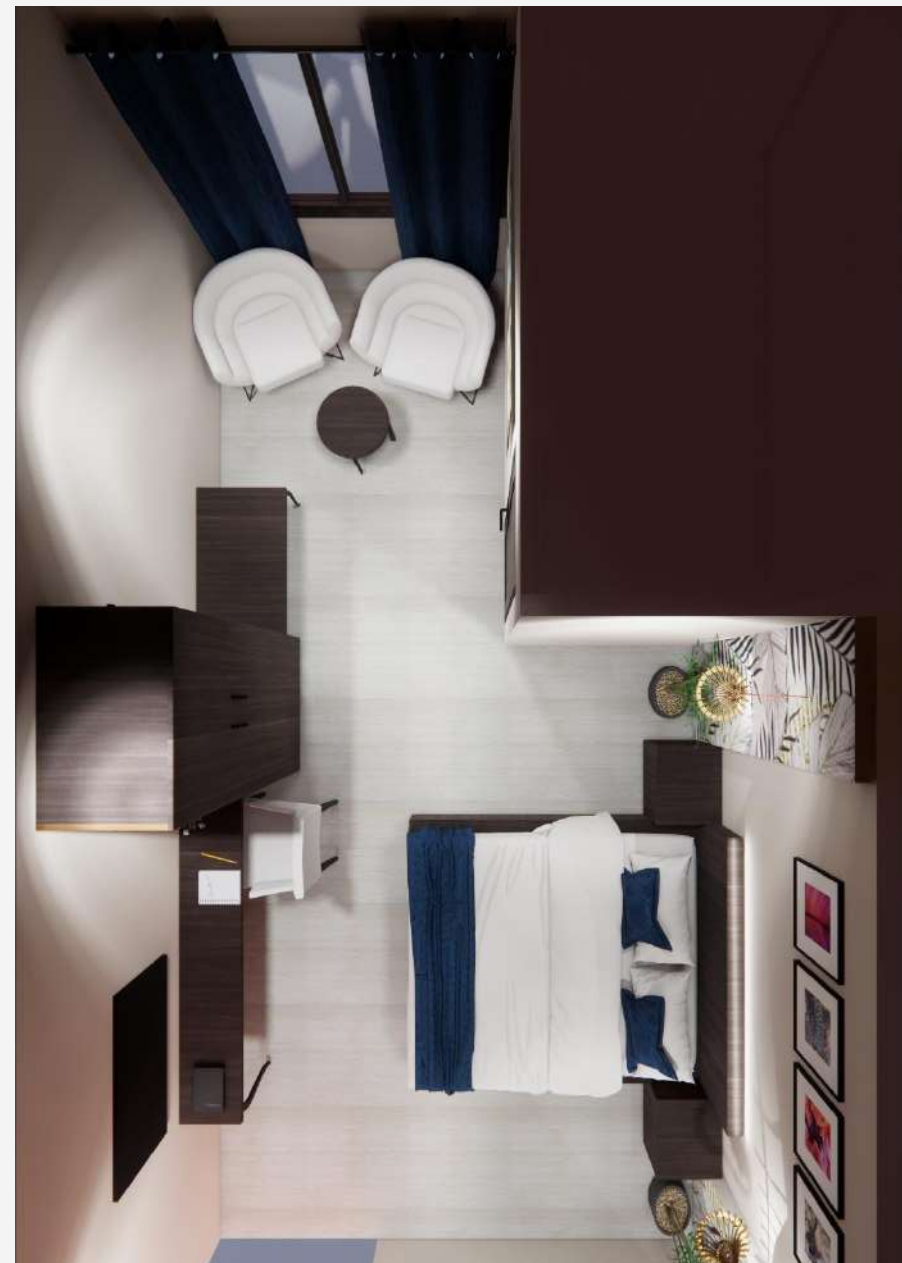


# HOTEL GRAND DARBAR

LOCATION: AHMEDNAGAR

PROJECT STATUS: ONGOING

THE ROOMS HAS BEEN DESIGNED IN BOTH MANNER ONE HAS SIDE BACK PANELS AND IN THE MIDDLE FRAMING IS DONE AND THE SECOND ONE WITH FULLY COVERED WITH BACK PANEL WITH FLORAL ART.



**THANKYOU**